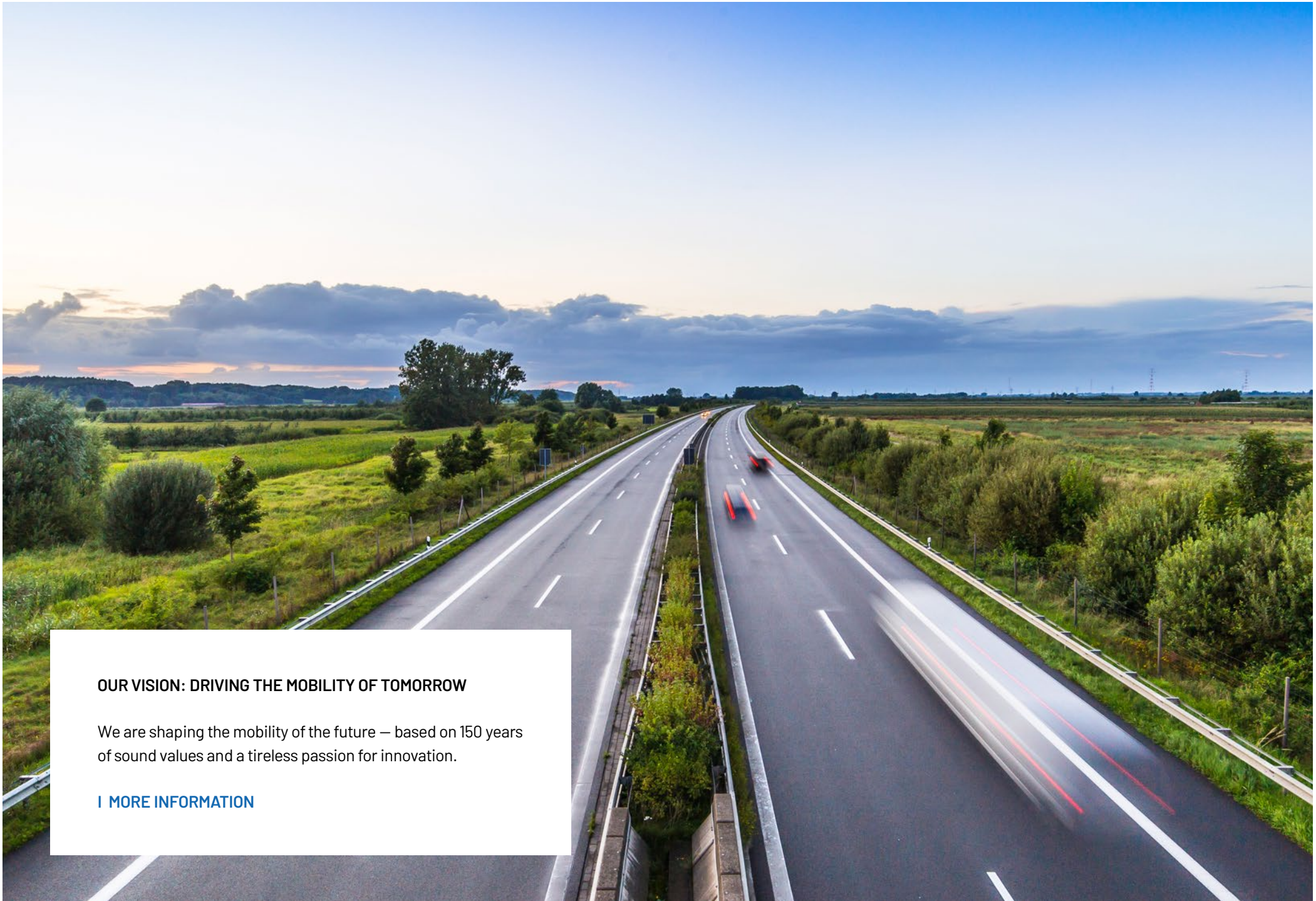


M O
V E



CONTENTS

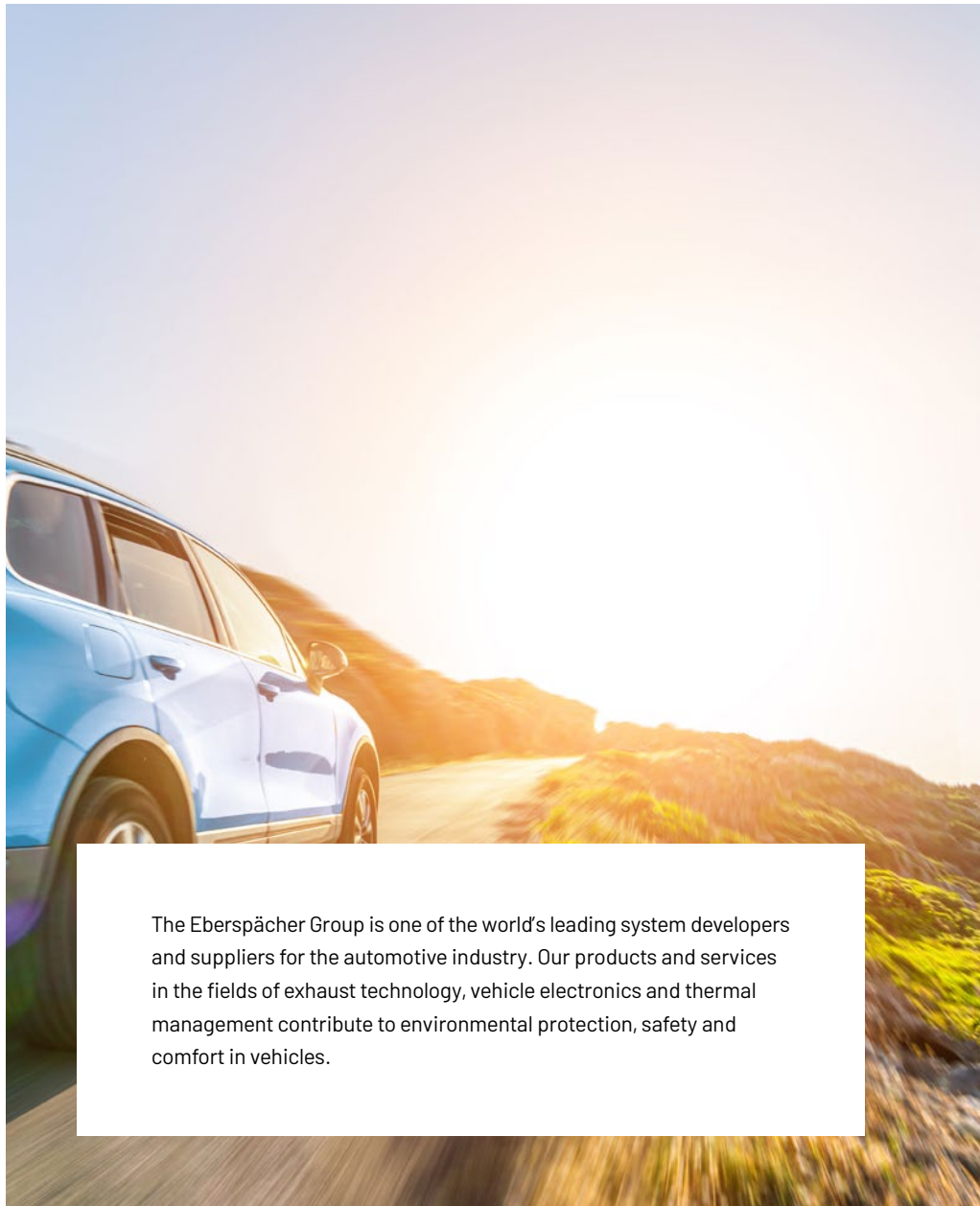
4	EBERSPÄCHER
8	SMART SOLUTIONS
9	DIVISIONS
12	PRODUCTION
13	VALUES
14	INNOVATIONS
15	SUSTAINABILITY
16	MANAGEMENT
17	HISTORY



OUR VISION: DRIVING THE MOBILITY OF TOMORROW

We are shaping the mobility of the future – based on 150 years of sound values and a tireless passion for innovation.

[| MORE INFORMATION](#)



The Eberspächer Group is one of the world's leading system developers and suppliers for the automotive industry. Our products and services in the fields of exhaust technology, vehicle electronics and thermal management contribute to environmental protection, safety and comfort in vehicles.

ALWAYS ON THE MOVE

The automotive industry currently exists in a sphere that deals with new technologies, society's strong level of environmental awareness, and strict legal requirements for Clean Mobility and traffic safety. At the same time, customers' desire for comfortable mobility solutions and the simple, intuitive operation of individual vehicle components is ubiquitous.

Against this background, the automotive supplier Eberspächer applies its strengths and actively drives the transformation forward. In doing so, innovation serves as the basis for all activities. Through the established Divisions Purem by Eberspächer, Climate Control Systems, Automotive Controls, and the New Business Division, they form the foundation of our company and the mobility of tomorrow.

The MOVE strategy describes the path to this goal. It bases the future development of the family-owned company on three pillars: Clean Mobility, Smart Solutions and Dedicated People.

| MORE INFORMATION

EBERSPÄCHER WORLDWIDE

OUR LOCATIONS

GLOBAL PRESENCE AT OVER 80 LOCATIONS

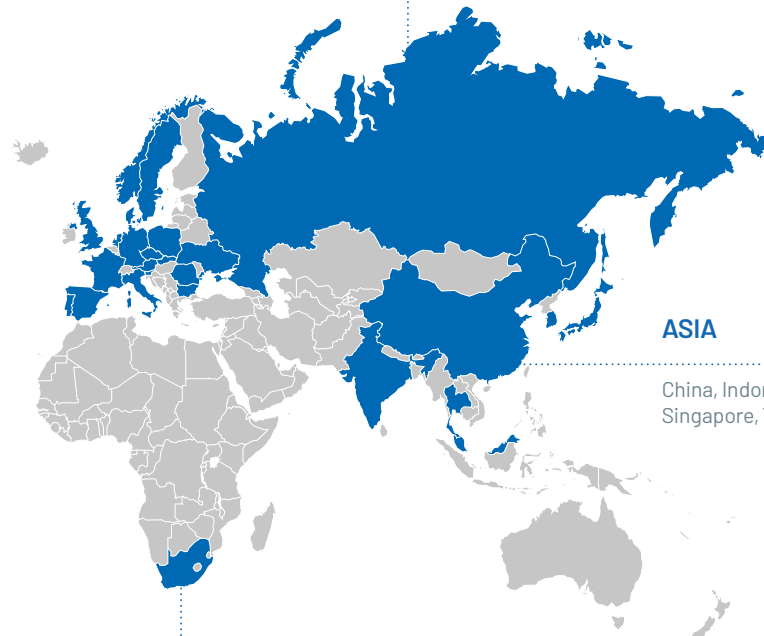
NORTH & SOUTH AMERICA

Brazil, Canada, Mexico, USA



EUROPE

Austria, Bulgaria, Czech Republic, Denmark, France, Germany, Great Britain, Italy, Netherlands, Norway, Poland, Portugal, Romania, Russia, Slovakia, Slovenia, Spain, Sweden, Ukraine



ASIA

China, Indonesia, Japan, Malaysia, Republic of Korea, Singapore, Thailand

AFRICA

South Africa



EBERSPÄCHER KEY FIGURES*



10,700

More than every second employee works outside Germany.



6.4 / 2.7

EUR billion consolidated revenue / net revenue

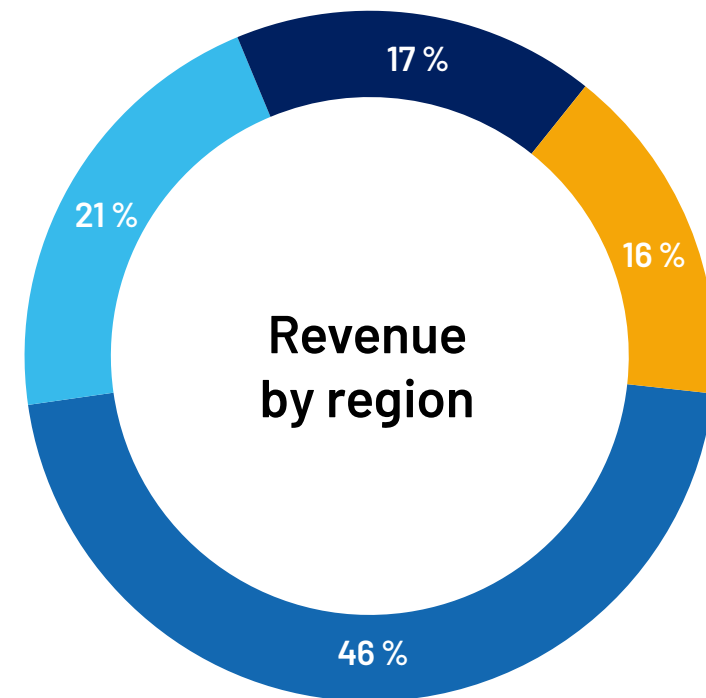


2030

the Company will achieve CO₂-neutral production.

*Rounded figures 2022.

[I MORE INFORMATION](#)



Germany Europe excluding Germany
The Americas Africa, Asia, Australia

EBERSPÄCHER KEY FIGURES

PERFORMANCE INDICATORS IN EUR MILLION	2022	Change to previous year in %	2021	2020	2019
Net revenue	2,722.3	19.9	2,269.7	2,296.4	2,742.4
Consolidated revenue	6,437.5	7.3	6,000.0	5,063.7	5,193.7
Revenue generated abroad as a % of consolidated revenue	83.6		83.7	83.0	79.6
Cashflow from operating activities	187.7	>100	-74.9	194.0	218.9
Ratio of equity to total assets as a %	18.0		20.2	19.0	24.2
Research and development expenses	51.6	17.5	43.9	32.0	47.1
Net income / net loss for the years vs. profit for the year	-94.4	<-100	21.0	-42.9	65.8
EBIT*	-21.0	<-100	52.8	34.7	127.3
EBITDA	118.2	-35.6	184.2	165.8	262.1
Number of employees**	10,681	0.8	10,600	10,622	n/a

*Earnings before tax, investment, and financial result

**Average number of employees including trainees



COMPETENCE ACROSS THE BOARD

With innovative exhaust technology, our products help to ensure that the most stringent emission and noise regulations are met in millions of vehicles. Our electronic solutions enable safer driving through efficient onboard network management. The Eberspächer thermal management systems are designed for maximum comfort and safety. In combustion or hybrid engines and in e-mobility, our components and systems ensure greater comfort, higher safety and a clean environment in everyday mobile life – in passenger cars, trucks and buses, recreational vehicles, boats and ambulances, in construction, agricultural and forestry machinery. Eberspächer is paving the way for future technologies such as mobile and stationary fuel cell applications as well as the use of hydrogen as an energy carrier.



PUREM BY EBERSPÄCHER



EUR 1,937 MILLION¹*

For clean and quiet mobility: Exhaust systems and acoustic solutions for passenger cars and commercial vehicles.

CLIMATE CONTROLS



EUR 721 MILLION*

For comfortable thermal management: pre-heaters and auxiliary heaters for all types of vehicles, air conditioning for buses, and special vehicles.

AUTOMOTIVE ELECTRONICS



EUR 64 MILLION*

For safe electronics: vehicle power and performance management, battery management systems, and control units for mobile, medical, and industrial applications.

BUSINESS AREA NEW BUSINESS



New business area to develop Balance of Plant components for mobile and stationary hydrogen fuel cell systems.

* Rounded revenue figure for 2022.

¹ Gross revenue with transitory items: EUR 5,652 million.

PUREM BY EBERSPÄCHER

Purem by Eberspächer is the Group of Companies' specialist for exhaust technology and acoustic solutions. The subsidiary shapes the clean and quiet mobility of tomorrow. Our innovative products for passenger cars and commercial vehicles improve air quality and sustainably lower traffic noise. As a leading global player and technology expert, Purem by Eberspächer develops systems for the exhaust gas aftertreatment of hydrogen engines and Balance of Plant components for fuel cell systems based on its existing core competencies.

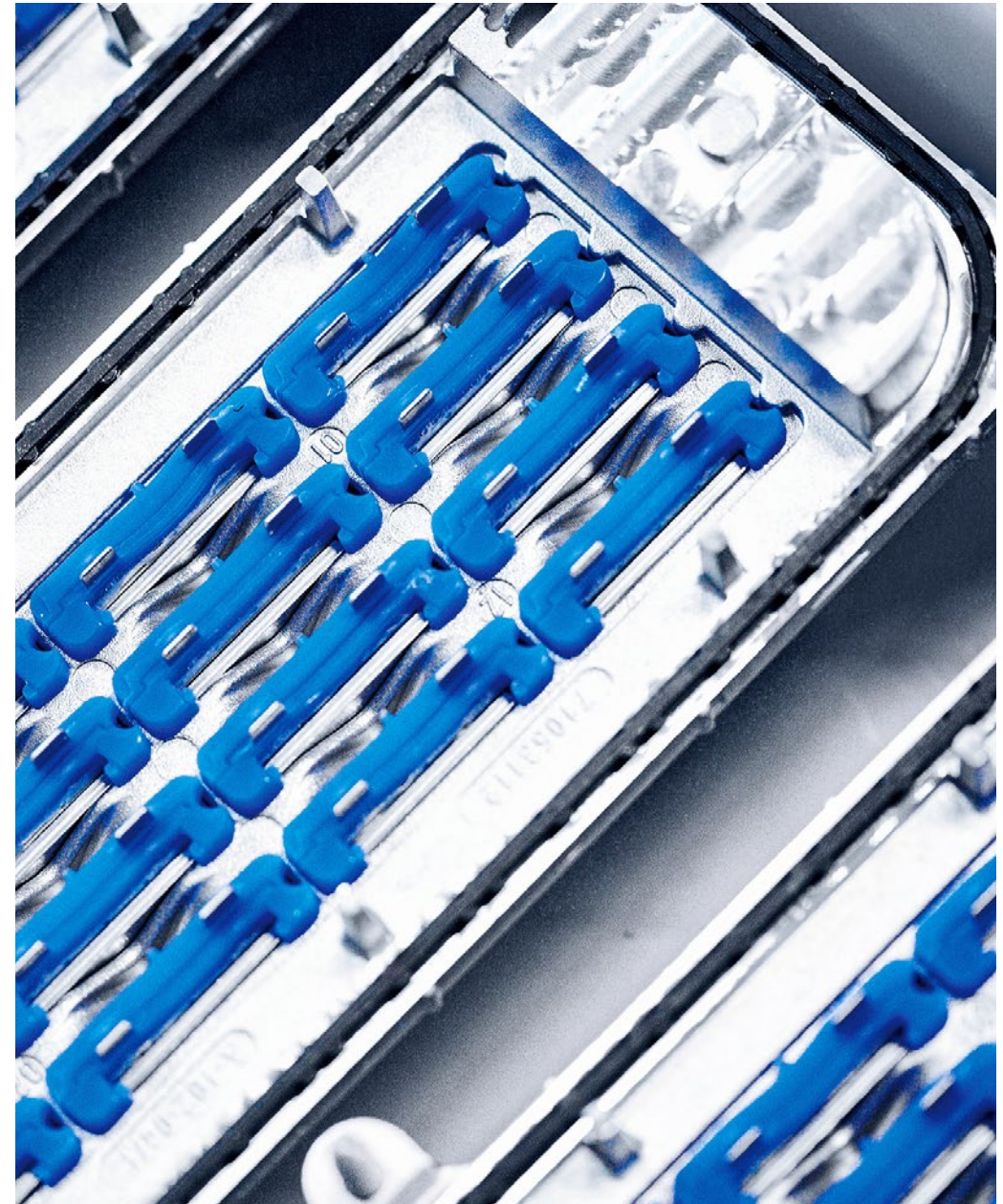


CLIMATE CONTROL SYSTEMS

Heating and cooling components from Eberspächer ensure more safety and comfort in road traffic. In summertime when the heat is sweltering, air-conditioning systems keep drivers cool and help them concentrate better. When it's cold outside in winter, pre-heaters clear the windows of ice and snow to enable good all-round visibility. The broad product portfolio includes solutions for all types of drive systems and vehicles, ranging from the classic combustion engine to the fully electric drive, and from passenger cars to special vehicles. Our heating and cooling solutions are equipped with an intuitive and digital user interface to suit the needs of the users.

AUTOMOTIVE CONTROLS

Eberspächer is a competent partner in vehicle electronics. Reliable electronic components are the crucial factor for success in high-technology applications. In modern vehicles, these systems control brake boosters or lane departure warning systems, or act as safety switches for autonomous vehicles. Eberspächer electronic solutions also offer a wide range of transportable components that are powered by electricity. Our battery management systems are used in medical devices and as energy storage in alternative electricity generation.





KEEP UP THE PACE

In order to make its innovations available to a broad market as quickly as possible, Eberspächer is increasingly relying on modern development and production methods. The entire processes of the Company are becoming increasingly digitalized. In the area of R&D, vPPD (virtual Product and Process Development), simultaneous engineering, and other virtual development and simulation methods are used. The individual companies within the Group work closely together across borders. Our customers benefit from this – worldwide.

PERFORMANCE THROUGH APPRECIATION

The greatest technological innovations come from people who are burning with dedication, intelligence, and passion and who have the ability to think outside the box. We call this Dedicated People. Our employees have the opportunity and possibility to contribute their creativity and to assume responsibility. Open and fair interactions with one another and our customers, in addition to flat organizational hierarchies, motivate and provide creative leeway. Our employees continuously develop their capabilities in this attractive working environment, thus creating a powerful global organization. As a family-owned company, we focus on trust and our strengths: long-term thinking and an established value culture.



The success of our company is based on the foundation of our shared values.

Martin Peters
Chairman of the Executive Board /
Managing Partner



**TRUST
RESPECT
TOLERANCE**



WE CONTINUE TO EVOLVE CONSTANTLY

Eberspächer's growth is driven both organically and by joint ventures, investments, and acquisitions. The Company consciously relies on a broad strategy for long-term development. Therefore, Eberspächer is working determinedly in line with its MOVE strategy on Smart Solutions for the Clean Mobility of the future.

Entrepreneurial, sustainable action is very important for us. The focus is on the long-term development of new business areas. This has sustained Eberspächer through the past and stabilized it against external influences.

[| MORE INFORMATION](#)

SUSTAINABILITY IN FOCUS

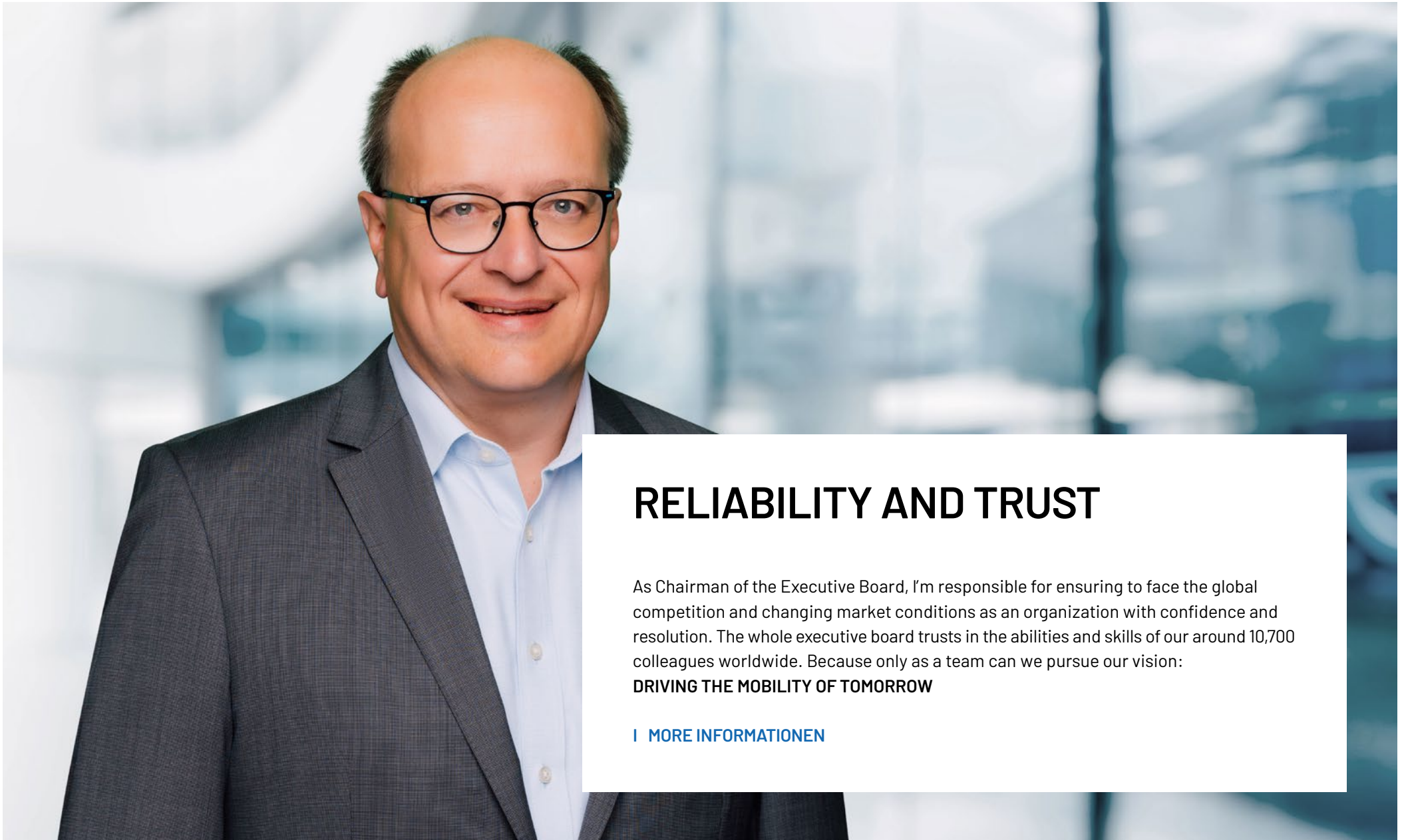
Our vision is driving the mobility of tomorrow. In doing so, we are always aware of our responsibility towards the environment and society. We consider all aspects in the scope of our corporate activities and are in regular exchange with our stakeholders. The sustainable corporate development is based on three areas of activity that guide our commitment: Green Footprint - Innovation - People

Within these focal areas, we aim to safeguard the livelihood of current and future generations by acting responsibly. We have set ourselves the goal of designing our production CO₂-neutral by 2030. Since the start of reporting in 2019, we have already reduced our global production-related CO₂ emissions by 45 percent. Our product portfolio includes exhaust gas purification components that reduce emissions by up to 90 percent, as well as heating solutions that do not affect the range of e-vehicles. In addition, we are working on solutions to make hydrogen efficiently usable. Our goal is to generate 50 percent of our net revenue independently of the passenger car internal combustion engine in 2025.

Diversity drives our entrepreneurial innovative strength. As a global company with 80 locations in 30 countries, we take responsibility at every single location. We support communities, schools and social institutions through various projects. Effective corporate governance ensures our contribution to a sustainable society and climate protection as well as our long-term success.

[I MORE INFORMATION](#)





RELIABILITY AND TRUST

As Chairman of the Executive Board, I'm responsible for ensuring to face the global competition and changing market conditions as an organization with confidence and resolution. The whole executive board trusts in the abilities and skills of our around 10,700 colleagues worldwide. Because only as a team can we pursue our vision:

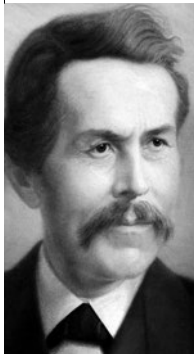
DRIVING THE MOBILITY OF TOMORROW

[| MORE INFORMATIONEN](#)

BEWEGENDE MOMENTE UND PRÄGENDE STATIONEN

1865

Master tinsmith and founder Jakob Eberspächer opens a workshop in Esslingen am Neckar, Germany, which soon specializes in metal-framed roof glazing.



1900

The first electrically powered machines are used; the staff increases to 80 employees.

1925

The number of employees grows to 350. The company produces glass roofs for factory halls, railway stations, and airship hangars across Europe.



1931

Production of mufflers for automobiles begins.

1933

The company starts developing vehicle heating systems.



1939 – 1945

Eberspächer is integrated into the armaments industry by the Nazi regime and, like many other companies, is assigned forced laborers. During the war, aircraft engine parts are also manufactured here for the first time.

1946

During the postwar period, Eberspächer produces products such as prostheses, metal cases, and small cookers.

1953

Pre-heaters go into mass production.

1954

The one-millionth muffler comes off the production line in Esslingen.



BEWEGENDE MOMENTE UND PRÄGENDE STATIONEN

1965

The company celebrates its 100th birthday and sees a revenue of DM 100 million.



1974

Start-up of series production of catalytic converters for passenger cars. Four years later, development of particulate filters begins.



1975

A technological breakthrough is made in the form of the legendary B1L: it is the first vehicle heater which can be installed directly in the passenger compartment.

1980er

In the 1980s, Eberspächer invests intensively in internationalization. Production facilities are established in Sweden, France, and Switzerland.



1990er

In the 1990s, Eberspächer establishes subsidiaries in South Africa, the Czech Republic, the US, Great Britain, Brazil, and Poland.



2001

The company diversifies further and enters the vehicle electronics market.

1999

Electrical heaters of the catem subsidiary go into series production. The company rises quickly to become the global market leader.

2010er

In the 2010s, the company enters the bus and coach AC market and the commercial vehicle exhaust market in the US. The first high-voltage heaters for electric vehicles go into production. The company celebrates its 150th anniversary in 2015.



today

Eberspächer is continuously expanding its worldwide activities and pushing ahead with hydrogen technologies and the digitization of its products.

EBERSPÄCHER GRUPPE GMBH & CO. KG
EBERSPÄCHERSTRASSE 24
73730 ESSLINGEN / GERMANY

PHONE +49 711 939-00
info@eberspaecher.com
www.eberspaecher.com

Imprint:

Corporate Communications
Eberspächer Group